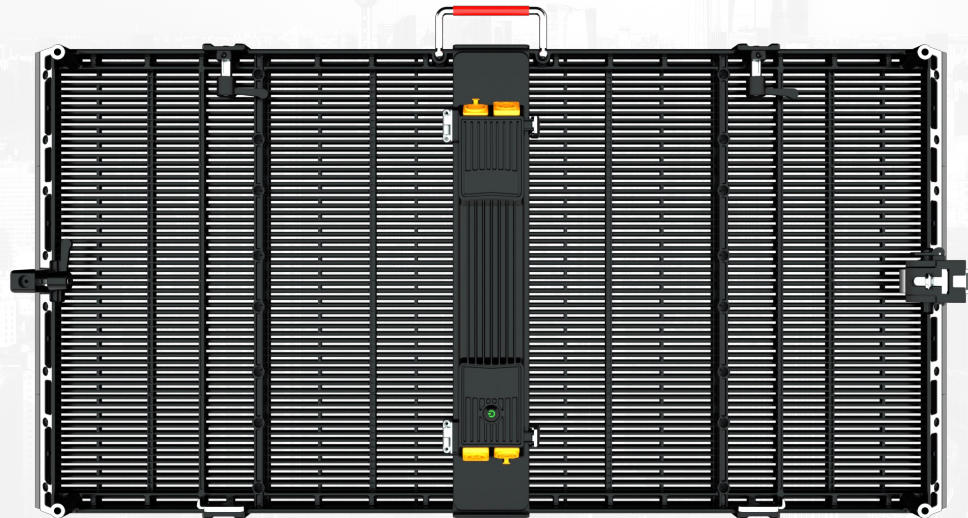


Transparent LED Display

OUT-Series





High Transparency



Perfect Heat
Dissipation



Light Weight



High Brightness



Customization



Front/rear
Maintenance



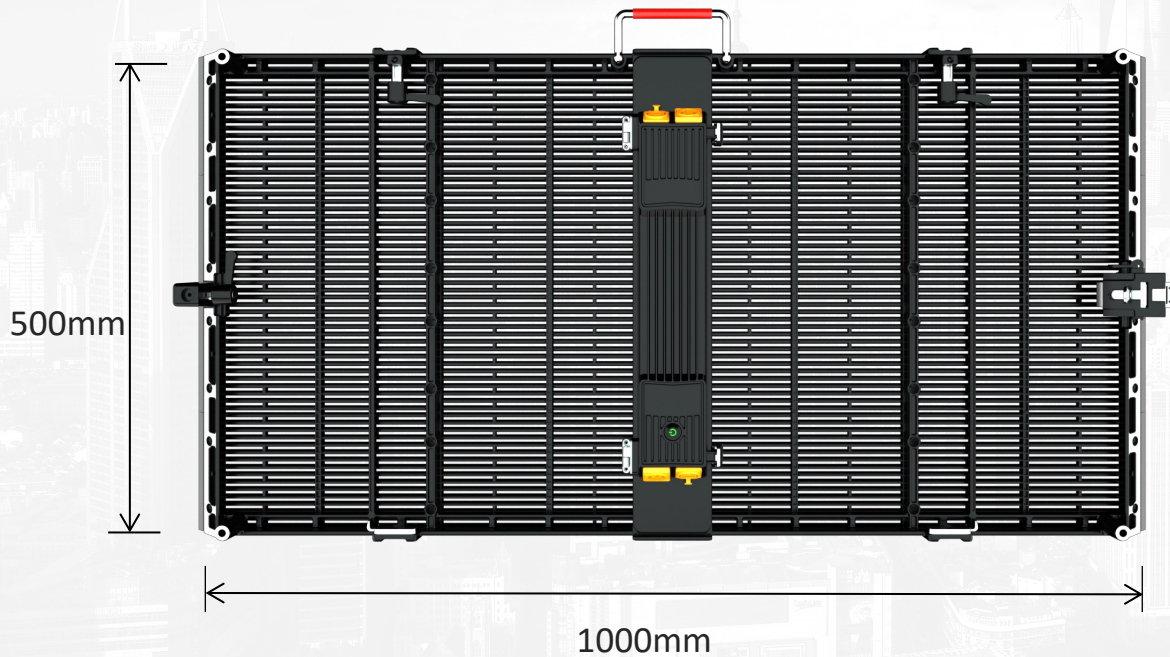
High Refresh Rate



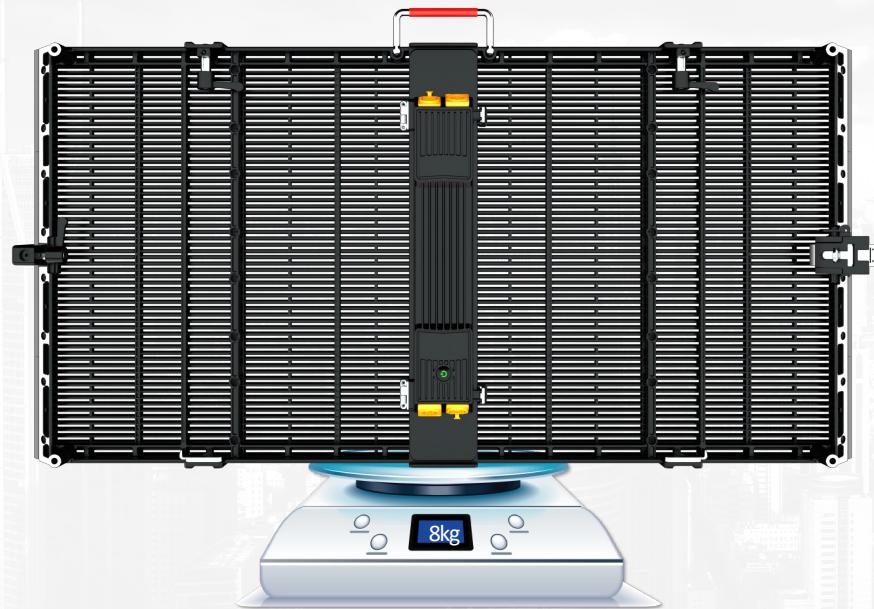
Wide viewing
angle

Dimension

- 1000 X 500 Cabinet Size;
- Support size customization to meet different needs.



LEDSINO



Light&Thin

50% Weight reduced

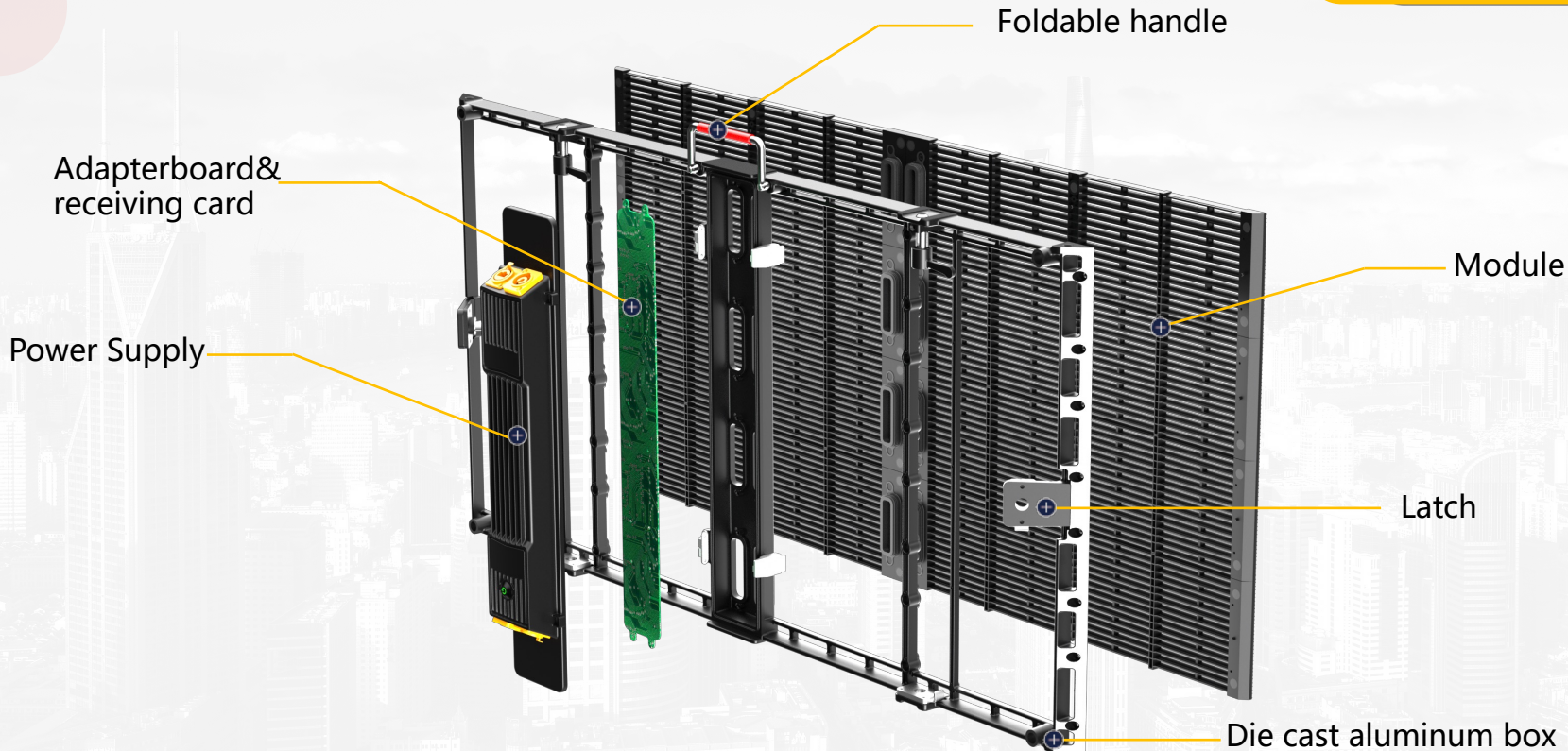
1000X500

8kg

LEDSINO

IP65 Outdoor Waterproofing





High Transparency

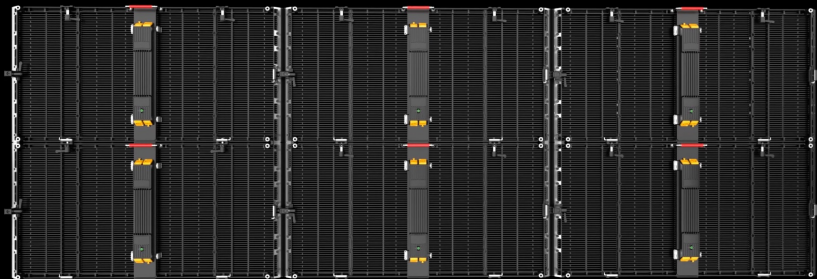
- Refined and simplified structural design, with a transparency rate of 70% -85%;
- High transparency, no effecting lighting and visibility;
- High ventilation, natural convection heat dissipation, no fan required.



LED SINO

seamless splicing

- Seamless splicing of various shapes through quick lock buckle connection;
- Modular design, modules and light strips can be independently disassembled for quick maintenance.

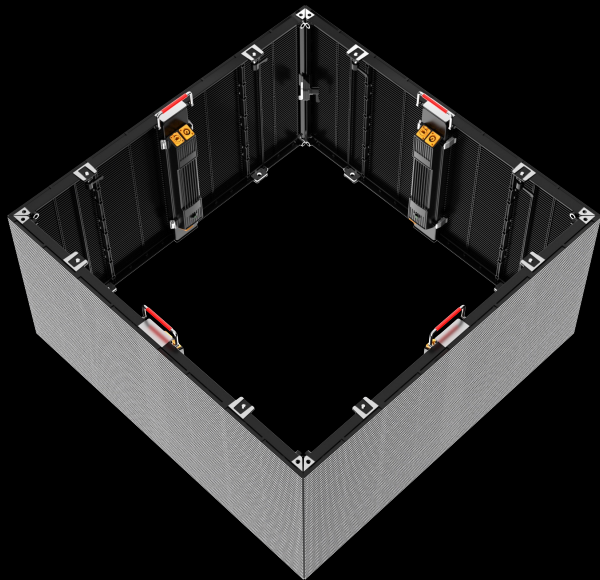


Seat mounting

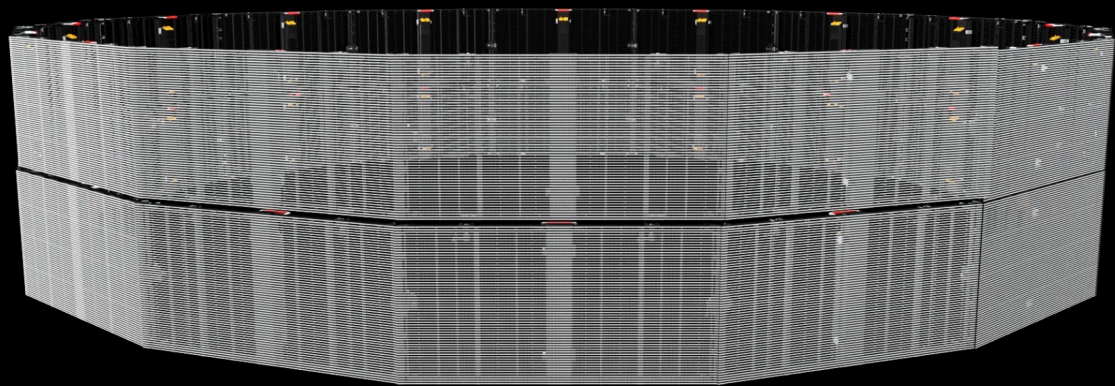


Hoisting

LED SINO



Square installation

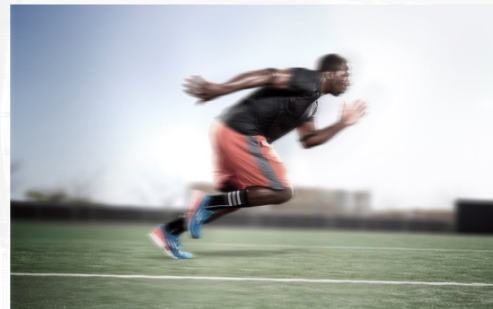


**Arc type
installation**

High refresh rate

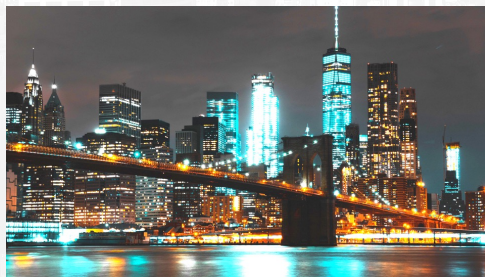


High refresh rate

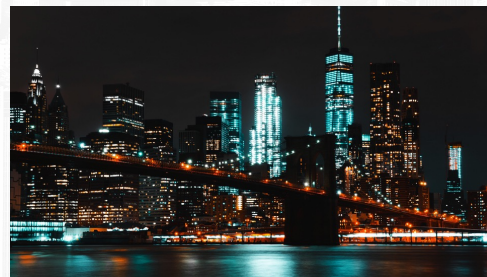


Low refresh rate

High grey scale



Hig grey scale



Low grey scale

LEDSINO

160° Super wide viewing angle

Perfect presentation of images from any angle



specifications

P2.6-5.2

P3.91-7.81

P10.416-10.416

P15.625-15.625

Pixel spacing (mm)	2.6* 5.2(up and down)	3.91*7.82(up and down)	10.416*10.416(up and down)	15.625*15.625(up and down)
LED Type	SMD1415	SMD1921	SMD2727	SMD2727
Physical density(Dot/sqm)	73728	32768	9216	4096
Drive mode	12	8	4	1
Brightness (cd/m ²)	3500	4000	5000	5000
Transparency	70%-85%	70%-85%	70%-85%	70%-85%
Refresh rate(Hz)	3840	3840	3840	3840
Protection level	IP65	IP65	IP65	IP65
Brightness adjustment	Level 256	Level 256	Level 256	Level 256
Viewing angle(V/H)	160°/160°	160°/160°	160°/160°	160°/160°
Best Viewing Distance	3m-50m	4m-50m	10m-100m	15m-200m
Power supply requirements	AC220-240V	AC220-240V	AC220-240V	AC220-240V
Max. power consumption(W/sqm)	800	800	800	800
Avg. power consumption(W/sqm)	150-250	150-250	150-250	150-250
Cabinet size(mm)	1000X500X32	1000X500X32	1000X500X32	1000X500X32
Cabinet weight(kg)	7.5	7.5	7.5	7.5
Installation method	Seat installation and lifting	Seat installation and lifting	Seat installation and lifting	Seat installation and lifting
Maintenance	Front/rear	Front/rear	Front/rear	Front/rear
Power input	AC90-264V,47-63Hz			
Working temperature/humidity(°C/RH)	-20~60°C/10%~85%			
Storage temperature/humidity(°C/RH)	-20~60°C/10%~85%			
Certification	CCC/CE/RoHS/FCC/CB/TUV/IEC			

LEDSINO

Application



The logo for LEDSINO, featuring the word "LEDSINO" in a bold, blue, sans-serif font. The letter "D" is stylized with a blue circular graphic element inside it. In the top left corner, there are two overlapping circles, one yellow and one pink.

THANKS



SHENZHEN LEDSINO OPTOELECTRONIC CO., LTD.

Web: <https://www.ledsino.com/>

Tel: 0086-13421345624; Email: manager@ledsino.com

Add: Building D, Hongfa Science Park, 2035 Songbai Road, Shiyan, Bao'an District, Shenzhen, Guangdong, China.